

Welcome

Our virtual meeting will begin shortly

****Please place your name, email, and affiliation in the chat box****

Website: uppermobaywetlands.com
Email: uppermobaywetlands@asdd.com
Mailing Address: Alabama State Port Authority,
P.O. Box 1588, Mobile, AL 36633



**UPPER MOBILE BAY
WETLAND CREATION**

Upper Mobile Bay Wetland Creation Public Meeting

September 14th, 2021, 4-5pm

Alabama State Port Authority



UPPER MOBILE BAY
WETLAND CREATION

Introduction

Alabama State Port Authority

- ▶ Bob Harris, Vice President Technical Services

Moffatt & Nichol

- ▶ Mary Beth Sullivan, PE, Project Manager
- ▶ Meg Goecker, Coastal Scientist
- ▶ Mindy Joiner, Meeting Facilitator



UPPER MOBILE BAY
WETLAND CREATION





What to expect from today's meeting

Agenda:

- ▶ **Project Goal**
 - ▶ Project Background
 - ▶ Project Benefits
- ▶ **Design Process**
 - ▶ Field Investigations and Studies
 - ▶ Design Criteria
 - ▶ Conceptual Design
 - ▶ Next Steps
 - ▶ Project Timeline
- ▶ **Questions and Answers**

Email: UpperMoBayWetlands@asdd.com

Website: UpperMoBayWetlands.com



**UPPER MOBILE BAY
WETLAND CREATION**

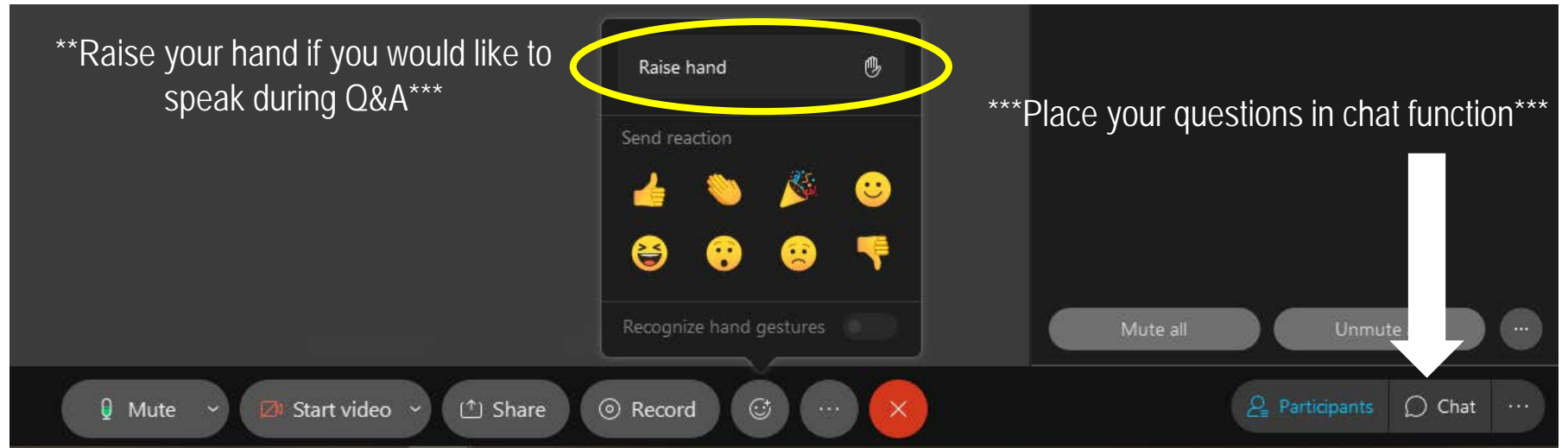


Housekeeping

- ▶ Muted during presentation
- ▶ Presentation to be recorded and put on website

Q&A Options:

- ▶ Place questions in **chat box** and moderator will read your question or comment out loud
- ▶ **Raise hand** – moderator will announce your name and you will be unmuted. You'll be given 3 minutes to ask a question.





Project Goal

- ▶ To plan for creation of 1,200 acres of wetlands in the Upper Mobile Bay through the beneficial use of dredged material



ALABAMA STATE
WETLANDS AUTHORITY
**UPPER MOBILE BAY
WETLAND CREATION**



Project Background

- ▶ Annually, 6 million cubic yards of sediment removed from Alabama's Mobile Harbor federal navigation channel and adjacent public berths.
- ▶ Have lost 10,000 acres of wetlands in Upper Mobile Bay over the last century. Project will create wetland where it can thrive.
- ▶ By constructing this project, sediments will remain in the Upper Mobile Bay system and be beneficially used for habitat.





Project Benefits

- ▶ Increases in wetland nursery habitat
- ▶ Increased commercial fisheries habitat and recreational opportunities
- ▶ Increase in submerged aquatic vegetation habitat
- ▶ Improved water quality
- ▶ Reduced damage resulting from storm surge
- ▶ Wise environmental stewardship of sediment resources
- ▶ Reduced annual dredging costs for the public port, a revenue-based agency





Design Process

Current Tasks:

- ▶ Field investigations and studies
- ▶ Design criteria
- ▶ Conceptual design

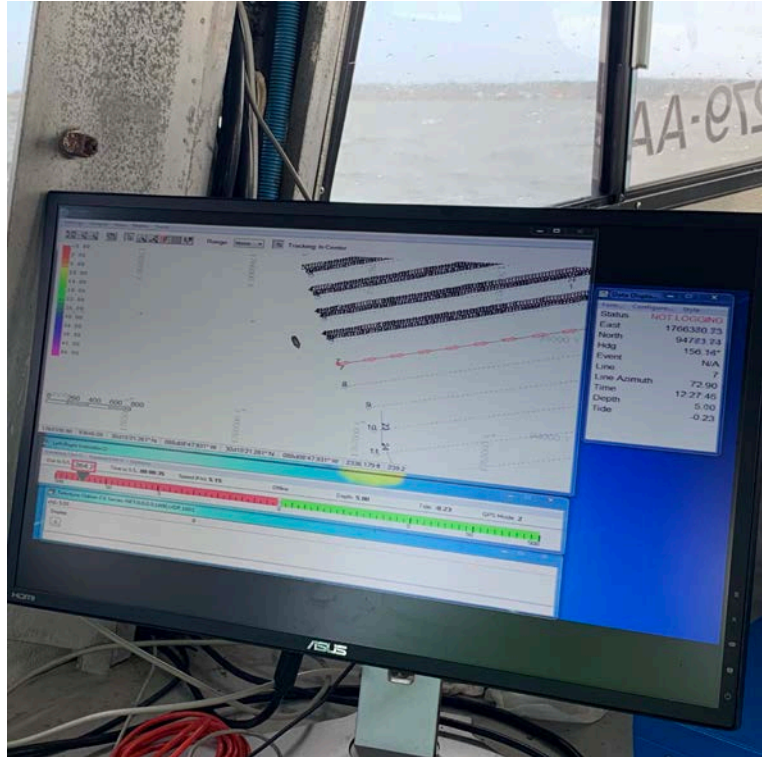


**UPPER MOBILE BAY
WETLAND CREATION**



Investigations and Studies

- ▶ Geotechnical
 - ▶ 70 soil borings
- ▶ Mapping Bay Bottom Elevations
 - ▶ 2,000 acres
- ▶ Cultural Resource Assessment
- ▶ Submerged Aquatic Vegetation

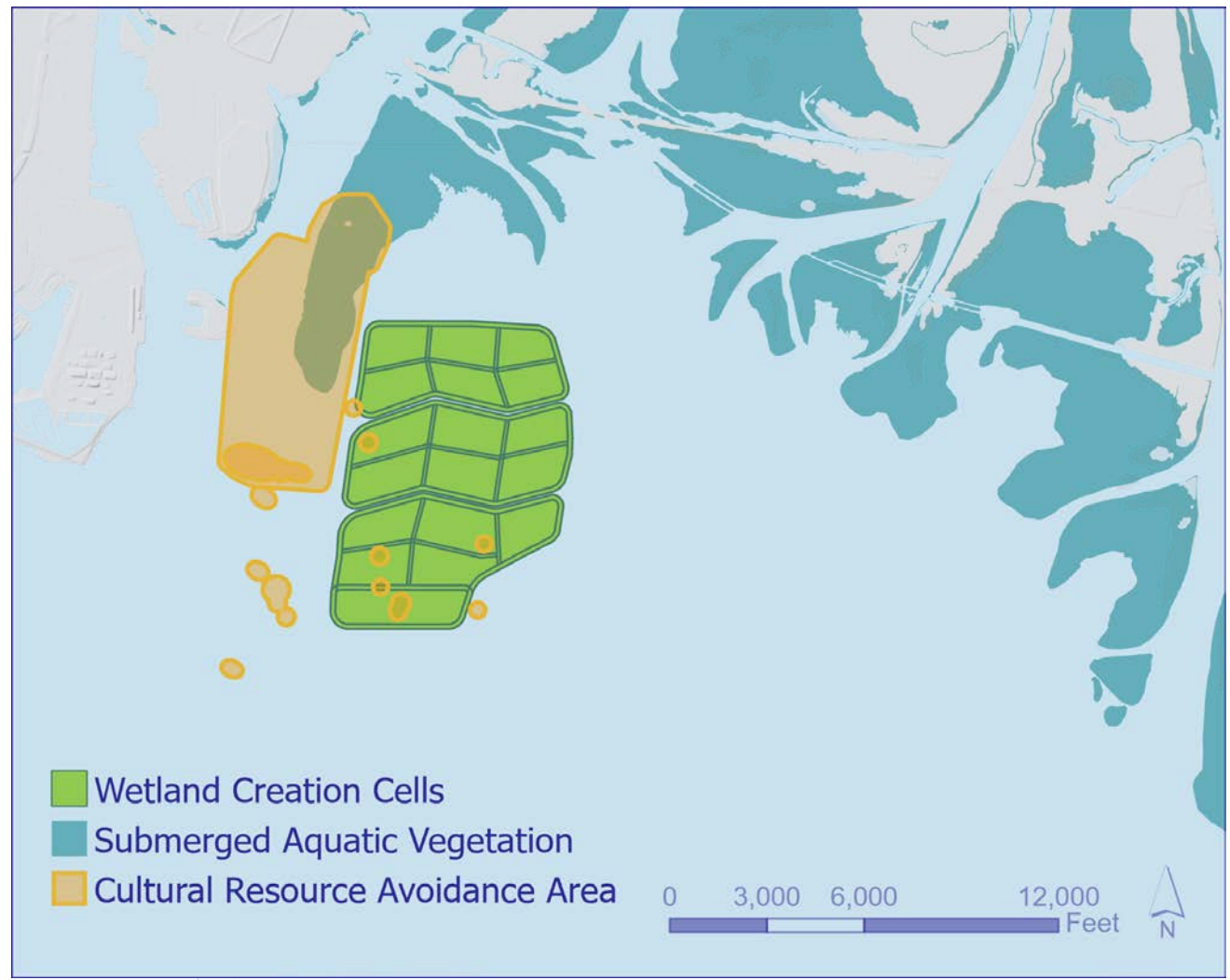




Design Criteria

Environmental Resources criteria:

- ▶ Avoid cultural resources
- ▶ Avoid submerged aquatic vegetation
- ▶ Maximize habitat diversity

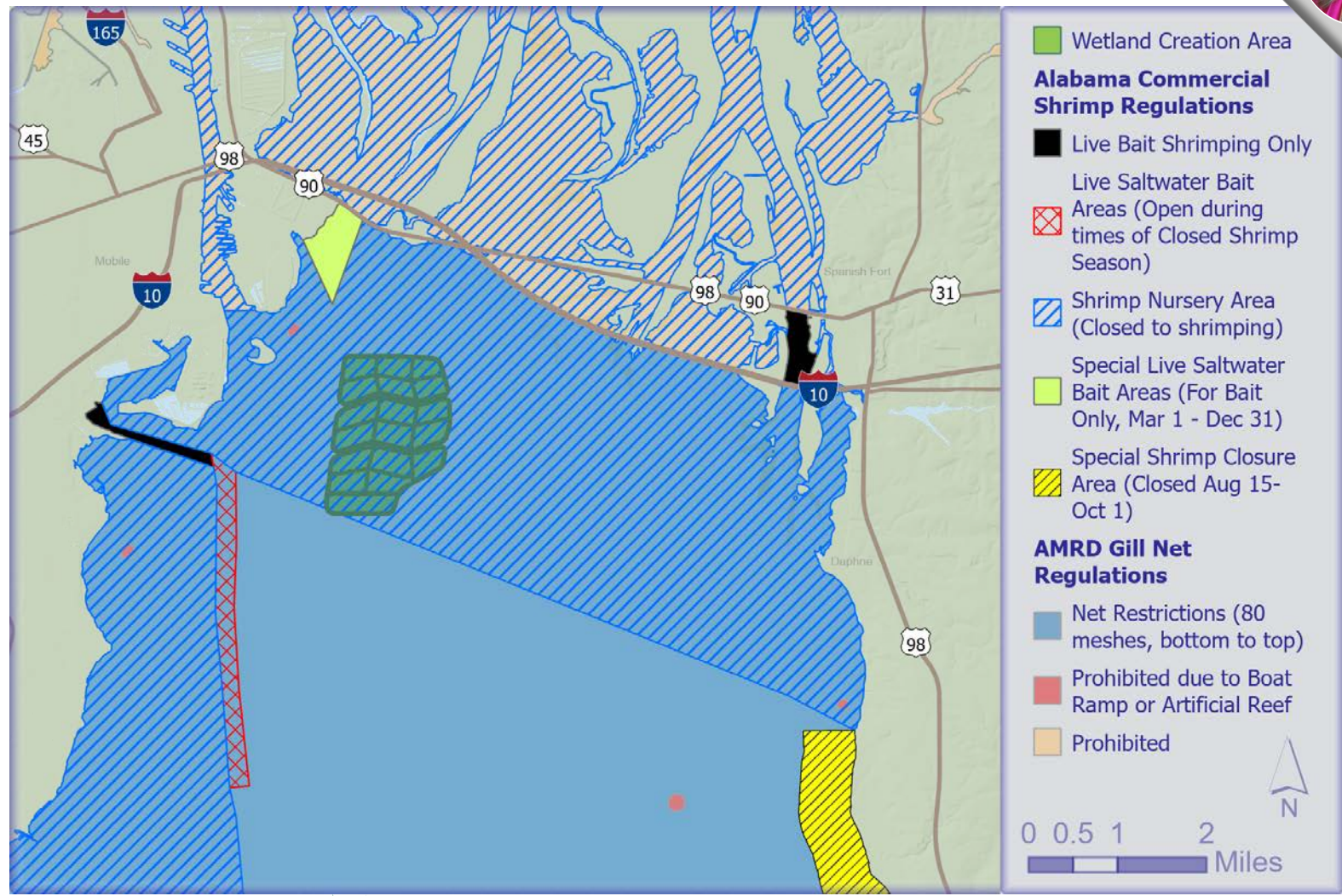




Design Criteria

Environmental Resources criteria:

- ▶ Minimize negative impacts to fisheries
- ▶ Maximize nursery habitat for fisheries
- ▶ Incorporate regulatory agency requirements

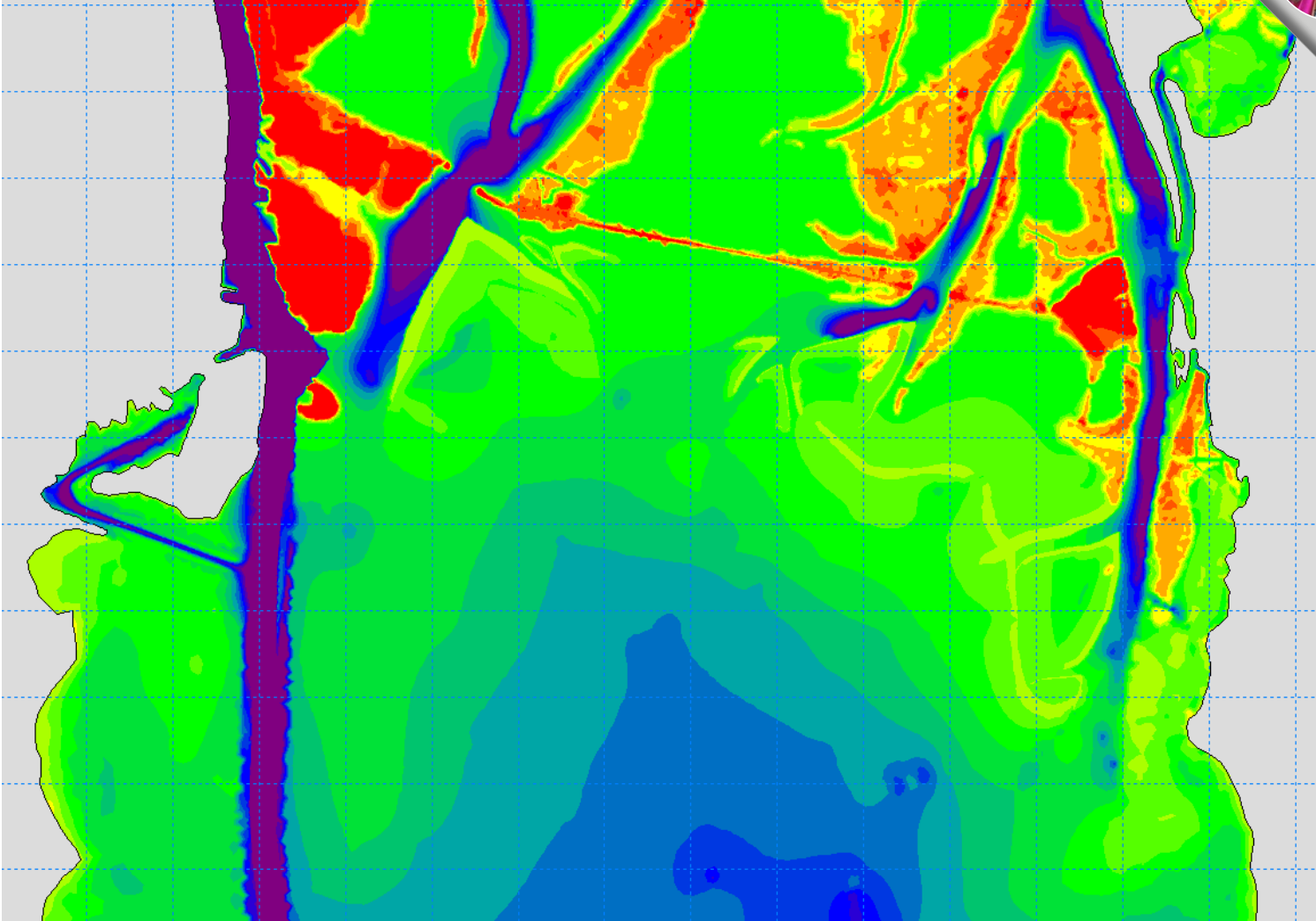




Design Criteria

Physical Criteria:

- ▶ Wind and wave climate
- ▶ Depth of water
- ▶ Elevation of wetland
- ▶ Slope stability of sediments



UPPER MOBILE BAY
WETLAND CREATION

Conceptual Design



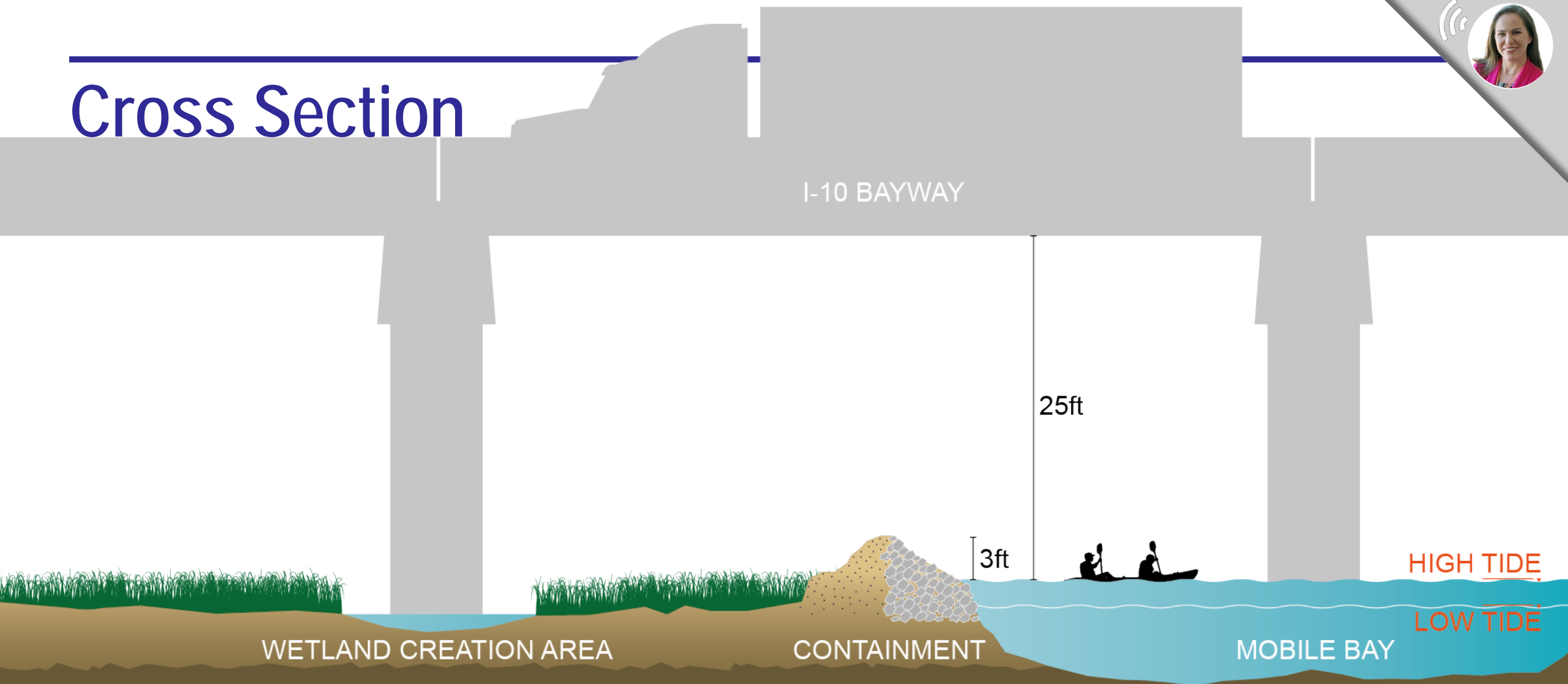
Conceptual designs that satisfy environmental and physical conditions in Upper Mobile Bay to maximize habitat value.



WETLAND CREATION SITE



Cross Section





Timeline





Next Steps

- ▶ Receive feedback on design concept from this meeting
- ▶ Design 100-acres of Wetland Creation
- ▶ Long-term Wetland Creation Plan
- ▶ Apply for a US Army Corps of Engineers Permit
- ▶ 2nd Public Meeting for Project Updates

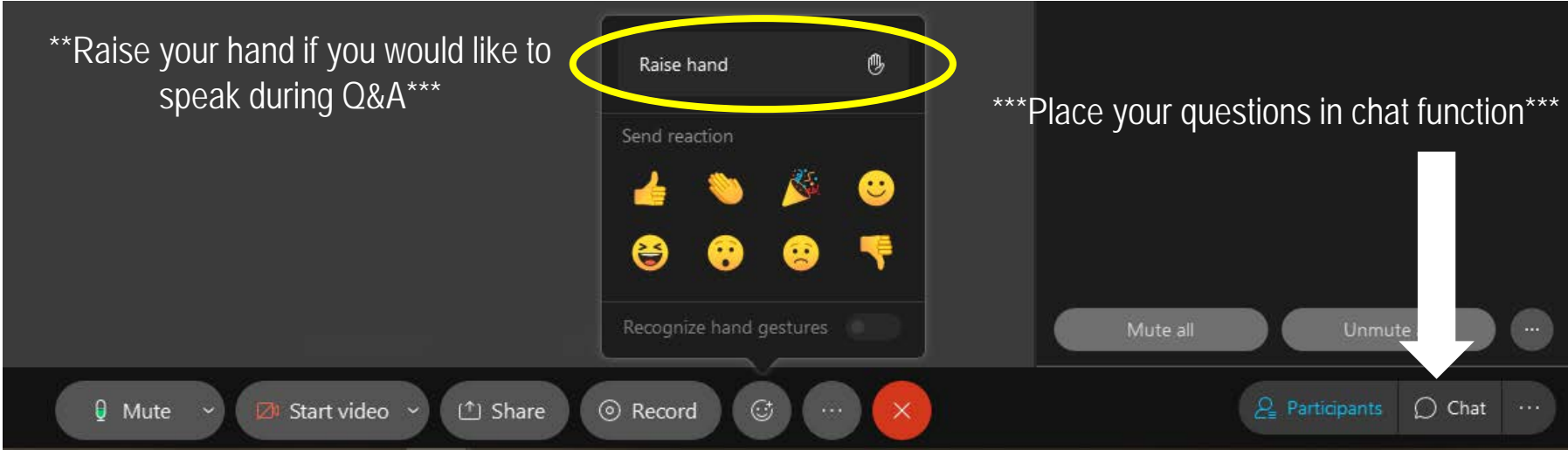




Questions & Answers

Options:

- ▶ Put questions in **chat box** and moderator will read your question or comment out loud
- ▶ **Raise hand** – moderator will announce your name and you will be unmuted. You'll be given 3 minutes to ask a question.



UPPER MOBILE BAY
WETLAND CREATION

Thank you



Public Engagement Opportunities

Website: UpperMoBayWetlands.com
Email: UpperMoBayWetlands@asdd.com
Mailing Address: Alabama State Port Authority,
P.O. Box 1588, Mobile, AL 36633



**UPPER MOBILE BAY
WETLAND CREATION**

